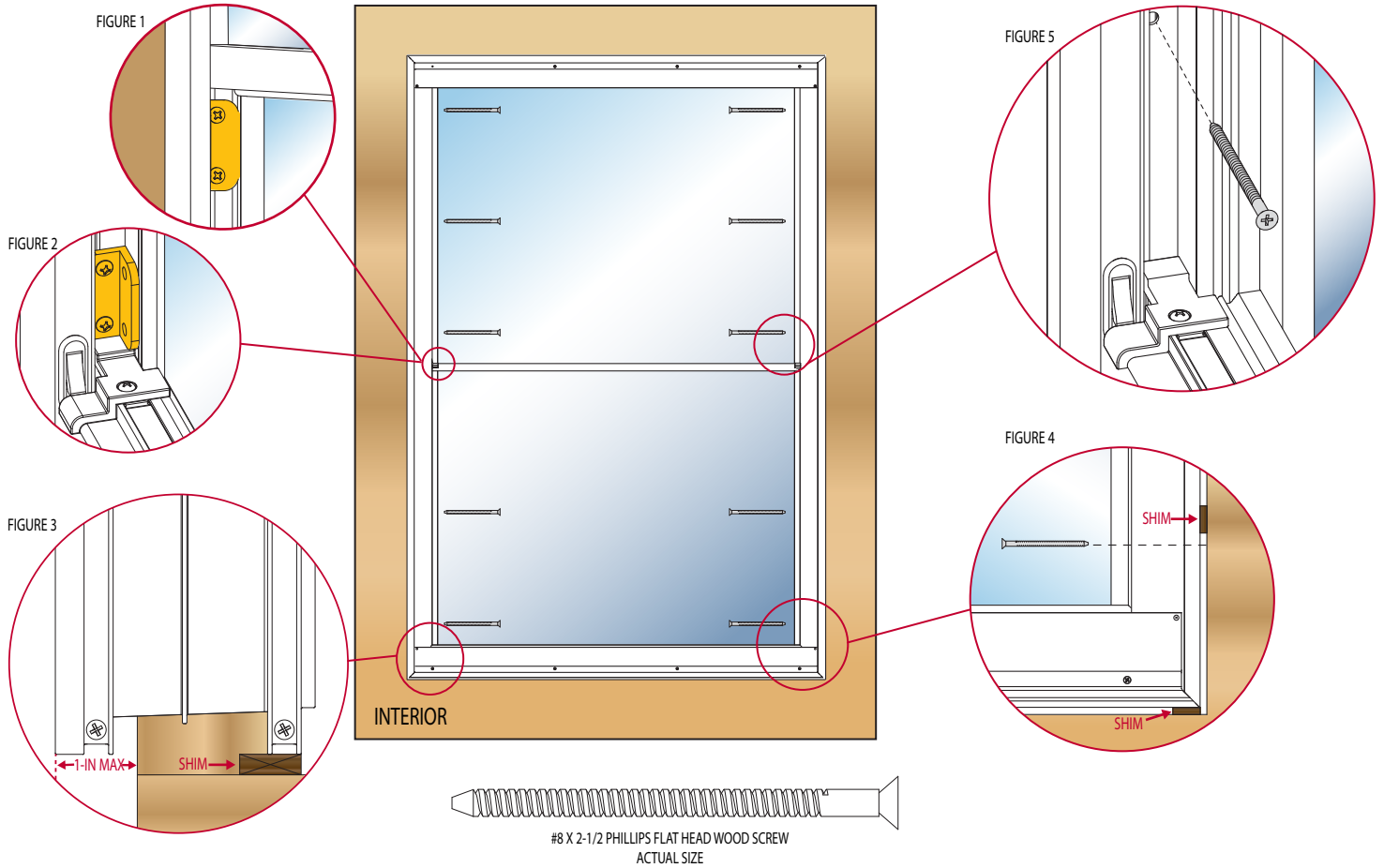


# INSTALLATION INSTRUCTIONS

**CAUTION**  
To prevent damage to the panels, do not turn it upside down.

Two people are recommended for installation. Use safe lifting techniques.



With the panel standing upright, remove and discard the three metal shipping clips. Two are located under the bottom of the top sash on the outside of the panel. One is on the inside on the top of the bottom sash, near the sash lock. (Figures 1 & 2)

The sash will now move freely. Remove the foam shipping block from under the bottom sash.

Open and close the sashes to confirm they operate properly. If they don't, looking from the top down, check that the cables are engaged on the pulleys. If either of the cables are not engaged, reset the cable in the channel on both pulleys.

Close the sash and engage the sash lock before proceeding.

To ensure the panel is secured properly, **DO NOT** overhang the panel more than 1-in beyond the outside face of the framing. (Figure 3) Make sure the front face of the panel is flush with or extends past the outermost surface of any framework, trimming, or any outside siding. This will help ensure water drains on the outside surfaces and does not weep inside the porch. For an added level of water protection, use flexible flashing at the sill, following the flashing manufacturer's instructions.

Using shims within 1-in of each screw hole along both jambs and under the corners of the sill, center the panel in the opening both vertically and horizontally. Shim to square and plumb. (Figure 4)

Install the provided screws in the pre-punched holes in the sides of the jambs of the top half of the panel. Move the sashes to expose the pre-punched holes on the bottom half of the panel and install the provided screws through the exposed holes in the sides of the jambs. To avoid bowing, **DO NOT** over tighten the screws. (Figure 5)

## FINISHING TOUCHES

From the exterior, create a continuous air seal by filling the gap between the framing and the panel with backer rod and sealant. For proper water drainage, the exterior trim should not extend past the face of the panel.

If desired, repeat on the interior using low expansion polyurethane foam or backer rod and sealant. Apply trim as desired.

For questions and assistance, see [www.LARSONdoors.com](http://www.LARSONdoors.com)



Scenix™ product is uniquely designed for areas that function as an extension of the outdoors. Although designed to deter moisture, Scenix™ retractable porch and patio panels are ideal for homeowners who wish to embrace the outdoors and some weather-related elements.

Scenix™ is appropriate only for non-heated, non-air conditioned spaces. Scenix™ windows are classified for use in AAMA/NPEA/NSA 2100-12 Category II sunrooms. Refer to your local building codes for window requirements specific to your location.